

THE MOST STUNNING SUITES WITH THE BEST AMENITIES ALL INCLUDED.

PREMIUM DRINKS / PREMIUM WI-FI / PREPAID TIPS / ONBOARD CREDIT

The Retreat isn't a place. It isn't an amenity. It isn't a service. It's all of that and more. The Retreat is an unparalleled vacation experience that includes every stunning suite, a private restaurant, an exclusive lounge, and a sundeck that rivals any high-end resort. Together with award-winning British designer Kelly Hoppen, CBE, we've created the ultimate in luxury experiences.



All Suites. All Exclusive. All Included.



LUMINAE AT THE RETREAT

A private restaurant boasting a boldly elegant interior that's as distinctive as the cuisine your clients will enjoy. The dishes here are found nowhere else on board, including complimentary signature dishes from Chef Daniel Boulud, our Global Culinary Ambassador.

THE RETREAT SUNDECK

A luxurious outdoor area that rivals any high-end resort, featuring a spacious lounge area, plush, stylish furniture, and an inviting pool and hot tub.

THE RETREAT LOUNGE

A warm and inviting exclusive lounge open 24/7. Your clients will enjoy complimentary beverages, gourmet bites, and a stylish place to unwind, along with the services of a dedicated concierge.

THE RETREAT CONCIERGE

From the moment your clients book to the moment they arrive home again, they'll enjoy seamless service from their dedicated team of Retreat Concierges.

Simply call 1-877-RETREAT for assistance with their booking, flights, hotel stays, limousines, shore excursions, dining reservations, spa treatments, and so much more.



Photo: The Retreat Sun Deck and Luminae on Celebrity BeyondSM.

WE'RE JUST A CLICK AWAY.
FOR FURTHER ASSISTANCE VISIT CRUISINGPOWER.COM

	ICONIC SUITE	EDGE VILLA	PENTHOUSE SUITE	ROYAL SUITE	CELEBRITY SUITE	AQUA SKY SUITE	SKY SUITE
AMENITIES							
DINING							
Luminae at The Retreat - Exclusive restaurant serving complimentary breakfast, lunch*, and dinner	•	•	•	•	•	•	•
Full in-suite breakfast, lunch, and dinner service	•	•	•	•	•	•	•
Complimentary Specialty Dining	•	•	•	•			
Option to dine in Blu based on availability						•	
SERVICES							
Retreat Concierge & Butler - To help with packing and unpacking, making dining reservations, spa appointments, and more	•	•	•	•	•	•	•
Celebrity Destination Insiders	•	•	•	•	•	•	•
Priority check-in when boarding the ship	•	•	•	•	•	•	•
Priority embarkation in all ports of call	•	•	•	•	•	•	•
Priority debarkation	•	•	•	•	•	•	•
Reserved theater seating on evening chic nights	•	•	•	•	•	•	•
COMPLIMENTARY AMENITIES/EXPERIENCES							
Daily delivery of afternoon savories	•	•	•	•	•	•	•
Welcome bottle of Perrier Jouet	•	•	•	•			
Welcome bottle of sparkling wine					•	•	•
Afternoon tea event hosted in The Retreat Lounge **	•	•	•	•	•	•	•
Premium luxury bath amenities	•	•	•	•	•	•	•
EXCLUSIVE SERVICES & AMENITIES							
Complimentary water, soda, and beer stocked daily	•	•	•	•			
Unlimited specialty restaurants	•	•	•	•			
Preferred seating in specialty restaurants	•	•	•	•			
Two complimentary bottles of premium spirits	•	•	•	•			
VIP canapés	•	•	•	•			
Complimentary laundry service (twice per cruise)	•	•	•	•			
Priority luggage drop-off and delivery	•	•	•	•			

ADDITIONAL AMENITIES INCLUDE:

DINING:

- Main and specialty restaurant seating preferences

SERVICE:

- Twice daily housekeeping service (makeup and turndown)
- Priority tender service
- Our signature friendly, personalized service with a guest to staff ratio of nearly 2:1
- Complimentary 24-hour room service
- Enhanced room service breakfast menu
- Complimentary beach towel service, shoeshine service, use of golf umbrella and binoculars

AMENITIES:

- Access to The Retreat, The Retreat Lounge, The Retreat Sundeck, The Retreat Pool, and The Retreat Bar
- In-room high-tech Peloton® cycle available upon request (only for Iconic Suites)
- Daily delivery of delectable delights
- Complimentary specialty coffee (in suite)
- Pillow selection upon request
- Plush 100% cotton bathrobes
- Frette® bath towels and linens
- Hairdryer

SUITE FEATURES:

- Veranda with lounge seating
- Massaging showerhead
- Floor-to-ceiling sliding glass doors
- Sitting area with sofa
- King size bed convertible to two twin beds (except as noted)
- Celebrity's eXhale® bedding featuring the Cashmere™ mattress, plush duvets and pillows
- Some staterooms may have a trundle bed
- Dual voltage 110/220
- Plentiful storage space in your bathroom and wardrobe
- Interactive Television system
- Individual safe
- Mini-fridge***

AQUA SKY SUITE:

Includes all of the above amenities & features plus:

- Unlimited access to the Sea Thermal Suite
- Spa Credit & Dedicated Spa Concierge: Personal Consultation & Complimentary fitness classes
- Exclusive spa treatment package discounts***
- 2 Yoga mats & 2 bottled waters in room daily
- In-room fitness amenities – expanded wellness on-demand TV
- Eco-friendly natural ingredients shower amenities

*Lunch only available on select days.

**In-suite afternoon tea service is available upon request.

***Additional charges may apply.

Services and amenities vary by suite category. The Retreat experience excludes the Galapagos Fleet.

CELEBRITY EDGE® SERIES SUITES

CELEBRITY ASCENTSM / CELEBRITY BEYONDSM / CELEBRITY APEX[®] / CELEBRITY EDGE



IC

ICONIC SUITE

1,892 sq. ft. Veranda 689 sq. ft.

- The largest suite in our fleet
- Positioned high on top of the ship above the bridge, with sweeping panoramic views from front to back
- Two bedrooms and two full baths
- Celebrity eXhale[®] bedding featuring a luxurious king-size Cashmere[™] mattress
- Dual sinks and separate full shower and whirlpool tub
- Private butler's pantry
- Expansive outdoor space with private hot tub and covered, double daybed
- Surround sound system with 65" smart TV



PS

PENTHOUSE SUITE

1,378 sq. ft. Veranda 197 sq. ft.

- Surround sound entertainment system with 65" smart TV
- Two bedrooms and full second bath
- Celebrity eXhale[®] bedding featuring a luxurious king-size Cashmere[™] mattress
- Primary bath includes whirlpool tub with a view
- Walk-in closets



EV

EDGE VILLA

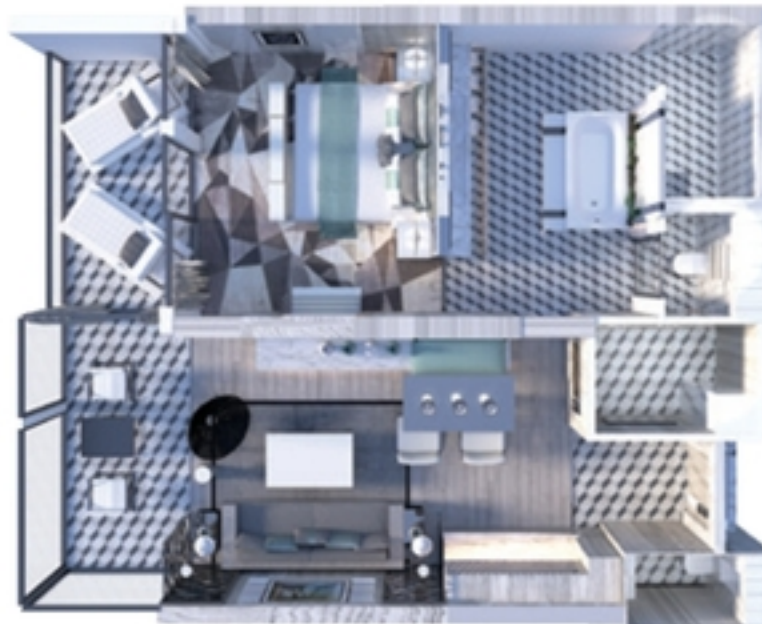
739 sq. ft. Veranda 211 sq. ft.

- Two-story luxury residences that seamlessly blend indoor and outdoor living
- Private terrace with three-foot-deep plunge pool and inviting lounge furniture
- Direct access to The Retreat[®]
- Surround sound system with 55" smart TV
- One bedroom and two full baths
- Celebrity eXhale[®] bedding featuring a luxurious king-size Cashmere[™] mattress
- Marble primary bath with separate tub and shower
- Double washbasins

STATEROOMS AND DESIGN DETAILS VARY PER SHIP.

Furniture configuration shown may vary in staterooms. All measurements are approximate.

CONNECTING STATEROOMS: If your clients are traveling with their family and/or friends, they should consider our convenient adjoining staterooms. For the most up-to-date suites and staterooms, interactive experiences, and 360° virtual tours of stateroom categories, visit celebrity.com.



RS

ROYAL SUITE

687 sq. ft. Veranda 72 sq. ft.

- Floor-to-ceiling sliding glass veranda door and window for maximum views
- Celebrity eXhale® bedding featuring a luxurious king-size Cashmere™ mattress
- Walk-in closet
- Expansive open design walk-in shower
- Whirlpool soaking tub
- 55" smart TV

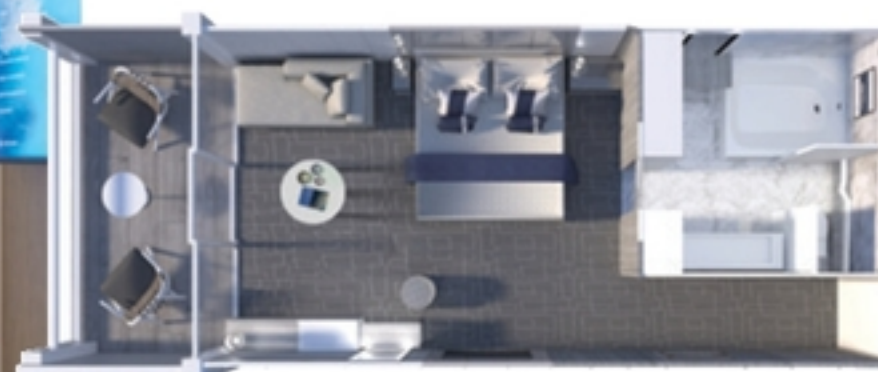


CS

CELEBRITY SUITE

401 sq. ft. Veranda 100 sq. ft.

- Surround sound entertainment system with 50" smart TV
- Veranda with lounge seating
- Celebrity eXhale® bedding featuring a luxurious king-size Cashmere™ mattress
- Mini-fridge
- Split bathroom with dual access
- Tub with shower and sink compartment with direct access from the bedroom
- The two compartments have a connecting door, to accommodate dual use



AS

AQUA SKY SUITE**

Includes all AquaClass® amenities
319 sq. ft. Veranda 79 sq. ft.

- Celebrity eXhale® bedding featuring a luxurious king-size Cashmere™ mattress
- Veranda with private seating
- Mini-fridge

SS

SUNSET SKY SUITE

299 sq. ft. Veranda 163 sq. ft.

S1*

SKY SUITE

319 sq. ft. Veranda 79 sq. ft.

MS

MAGIC CARPET® SKY SUITE

298 sq. ft. Veranda 102 sq. ft.

* ♿ Some suites and staterooms are accessible for wheelchair users and other guests with disabilities. They include roll-in showers, grab bars, and other accessible features. Please see the specific ship deck plans for the locations of all wheelchair accessible suites. For more details, visit celebrity.com/accessiblestaterooms.

** Available on Celebrity BeyondSM only. To be introduced fleet wide beginning in April 2023.

CELEBRITY EDGE® SERIES STATEROOM AMENITIES

CELEBRITY ASCENTSM / CELEBRITY BEYONDSM / CELEBRITY APEX® / CELEBRITY EDGE

ERASE THE BOUNDARIES BETWEEN INSIDE AND OUT.

Famed award-winning British designer Kelly Hoppen, CBE, took the lead on design, creating the intimacy of an inviting, indulgent urban apartment that opens to the most beautiful scenery on earth. Every stateroom on our Edge Series is a spacious work of art that your clients will be glad to call their home away from home. From our new Single Staterooms to our Concierge Class and AquaClass® Staterooms with Infinite Veranda®, with connecting stateroom options, it's easier than ever for families and friends to get together and get away from it all.

AquaClass

Edge Series AquaClass guests enjoy a state-of-the-art Infinite Veranda, king-size Cashmere™ Mattress bedding, and soothing stateroom touches, including aromatherapy diffusers and pillow menus. Plus, unlimited access to the SEA Thermal Suite, complimentary dining at Blu restaurant, and a personal spa concierge.



CONCIERGE CLASS & INFINITE VERANDA® STATEROOMS

A dedicated concierge is always just steps away from your clients' room to assist with their vacation needs. Your clients can attend exclusive events, including an Exclusive Concierge Class lunch and Destination Seminar. Then there's the room, the Infinite Veranda takes the whole room right to the water's edge. Here, you'll find its little details so meticulously thought out that they truly make a world of difference. It's a room that's so much more than a room—it's an experience.

EDGE STATEROOMS WITH INFINITE VERANDA

The most transformational aspect of our stateroom design is the introduction of the Edge Stateroom with Infinite Veranda, where with the touch of a button, your entire living space becomes the veranda, letting you walk right out to the water's edge. These staterooms feature the latest in design and technology, and they're 23% larger than our award-winning Solstice® Series veranda staterooms.

178 possible options of connecting staterooms make it easier than ever for families and friends to connect at sea. Combine two adjoining Edge Staterooms with Infinite Veranda to become one. Or connect the Edge Single Stateroom with Infinite Veranda with a Deluxe Ocean View Stateroom to create the perfect space for an accompanying grandparent, nanny, or in-law.



Photo: morning coffee on an Infinite Veranda. Infinite Veranda stateroom.

WE'RE JUST A CLICK AWAY.
FOR FURTHER ASSISTANCE VISIT CRUISINGPOWER.COM

AQUACLASS STATEROOM WITH INFINITE VERANDA®

Includes most Concierge Class & stateroom amenities plus:

ALL INCLUDED*

- Prepaid Tips
- Basic Wi-Fi
- Classic Drinks Package

DINING:

- Exclusive restaurant, Blu, created just for AquaClass® guests, serving complimentary, healthy continental breakfast daily, and an unforgettable contemporary dinner nightly

SERVICE:

- Special invitation to a VIP tour of The Spa on embarkation day

AMENITIES:

- Welcome bottled water (2 bottles daily)
- Daily delivery of flavored tea
- Yoga mats
- Slippers and tote bags
- Plush 100% cotton towels and bathrobes
- Hairdryer
- Laundry service (with a charge) and complimentary beach towel service

STATEROOM FEATURES:

- Rain Shower and Water Fall Shower, with body spray functions.
- Double occupancy
- Centrally located to all amenities
- Unlimited access to the SEA Thermal Suite with heated tile loungers
- Close access to Blu

CONCIERGE CLASS STATEROOM WITH INFINITE VERANDA

Includes all stateroom amenities plus:

ALL INCLUDED*

- Prepaid Tips
- Basic Wi-Fi
- Classic Drinks Package

SERVICE:

- Enhanced room service breakfast menu
- Personalized Concierge service
- Exclusive Destination Seminar
- Complimentary shoeshine service

DINING:

- Main seating time preferences
- Welcome Aboard Concierge Class Luncheon

AMENITIES:

- Welcome sparkling wine*
- Daily delectable delights
- Pillow selection upon request
- Plush 100% cotton towels and bathrobes
- Hairdryer
- Custom blended bath products (shampoo, conditioner, body lotion, shower cap and soap)
- Laundry service (with a charge) and complimentary beach towel service
- Use of golf umbrella and binoculars
- Celebrity embossed key holder

STATEROOM FEATURES:

- Floor-to-ceiling sliding glass doors
- Sitting area with sofa
- Veranda with lounge seating

STATEROOM AMENITIES

ALL INCLUDED*

- Prepaid Tips
- Basic Wi-Fi
- Classic Drinks Package

SERVICE:

- Our signature friendly, personalized service with a guest to staff ratio of nearly 2:1
- Twice daily housekeeping service (makeup and turndown)
- 24-hour room service**
- Fresh ice delivered to stateroom upon request
- 100% cotton bathrobes
- Laundry service***
- Complimentary beach towel service

DINING:

- Complimentary breakfast, lunch, and dinner available in a variety of restaurants

AMENITIES:

- Four pillows in every stateroom
- Plush 100% cotton bathrobes and towels
- Hairdryer
- Custom blended bath products (shampoo, conditioner, body lotion, shower cap and soap)
- Cotton balls and cotton swabs*

STATEROOM FEATURES:

- Celebrity's eXhale® bedding featuring king sized Cashmere™ mattress, plush duvets and pillows, and 100% cotton linens (except our 16 new Edge Single Staterooms with Infinite Veranda—they feature queen-sized beds)
- Two lower double beds convertible to King (except as noted)
- Interactive television system
- Some staterooms may have a trundle bed
- Dual voltage 110/220
- Plentiful storage space in your bathroom and wardrobe
- Individual safe
- Mini-fridge**

*For more information go to page 230.

**Delivered at guests' convenience by stateroom attendant.

***There is a late night service fee of \$4.95USD between 11 PM - 6 AM.

***Additional charges apply.

CONNECTING STATEROOMS: If your clients are traveling with family and/or friends, they should consider our convenient adjoining staterooms.

CELEBRITY EDGE® SERIES STATEROOMS

CELEBRITY ASCENTSM / CELEBRITY BEYONDSM / CELEBRITY APEX® / CELEBRITY EDGE

A1 * **PRIME AQUACLASS® STATEROOM**
Total living space 243 sq. ft.
Veranda 42 sq. ft.

A2 **AQUACLASS® STATEROOM**
Total living space 243 sq. ft.
Veranda 42 sq. ft.

C1 **PRIME CONCIERGE CLASS STATEROOM**
Total living space 243 sq. ft. / Veranda 42 sq. ft.

C2 * **CONCIERGE CLASS STATEROOM**
Total living space 243 sq. ft. / Veranda 42 sq. ft.

C3 **CONCIERGE CLASS (Partial View)**
Total living space 243 sq. ft. / Veranda 42 sq. ft.

E1 * **PRIME EDGE STATEROOM WITH INFINITE VERANDA®**
Total living space 243 sq.ft. / Veranda 42 sq. ft.

E2 **EDGE STATEROOM WITH INFINITE VERANDA**
Total living space 243 sq.ft. / Veranda 42 sq. ft.

E3 **EDGE STATEROOM (Partial View) WITH INFINITE VERANDA**
Total living space 242 sq.ft. / Veranda 42 sq. ft.



ES **EDGE SINGLE STATEROOM WITH INFINITE VERANDA**
Total living space 184 sq. ft.
Veranda 42 sq. ft.



SV **SUNSET VERANDA STATEROOM**
228 sq. ft. Veranda 89 sq. ft.



P1 **DELUXE PORTHOLE VIEW STATEROOM WITH VERANDA**
201 sq. ft. Veranda 40 sq. ft.

P2



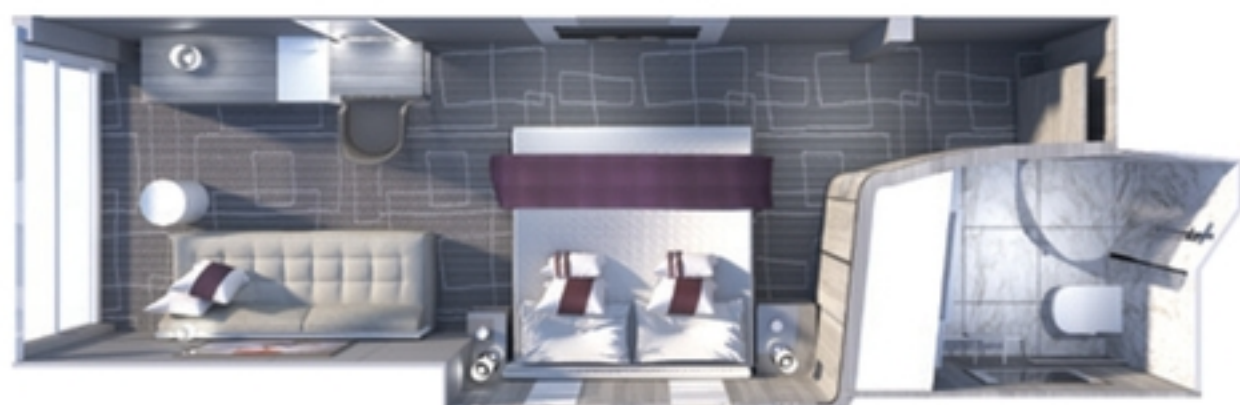
STATEROOMS AND DESIGN DETAILS VARY PER SHIP.

Furniture configuration shown may vary in staterooms. All measurements are approximate.

CONNECTING STATEROOMS: If your clients are traveling with their family and/or friends, they should consider our convenient adjoining staterooms. For the most up-to-date suites and staterooms, interactive experiences, and 360° virtual tours of stateroom categories, visit celebrity.com.



PO PANORAMIC OCEAN VIEW STATEROOM
212 sq. ft.

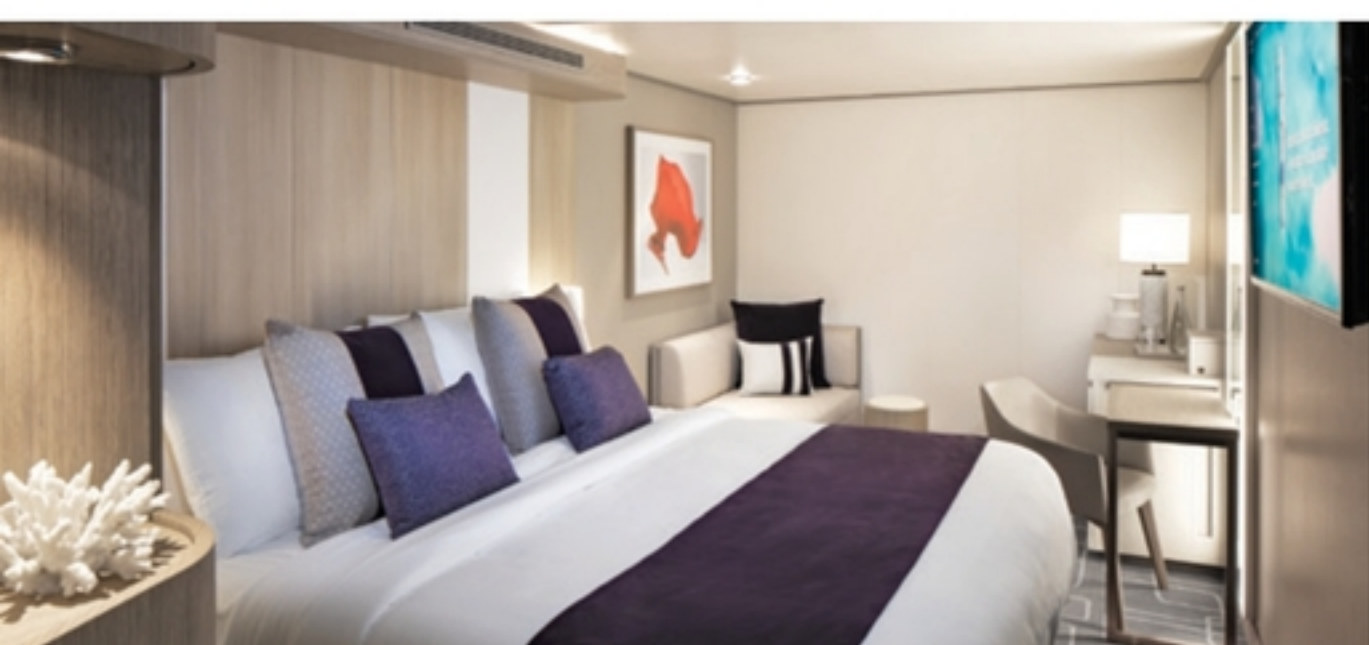


DO * DELUXE OCEAN VIEW STATEROOM
238 sq. ft.

O1 * PRIME OCEAN VIEW STATEROOM
200 sq. ft.



O2 OCEAN VIEW STATEROOM
200 sq. ft.



DI * DELUXE INSIDE STATEROOM
202 sq. ft.



12 INSIDE STATEROOM
181 sq. ft.



*Some suites and staterooms are accessible for wheelchair users and other guests with disabilities. They include roll-in showers, grab bars, and other accessible features. Please see the specific ship deck plans for the locations of all wheelchair accessible suites. For more details, visit celebrity.com/accessiblestaterooms.