

  
**Captain Cook**  
**Cruises™**  
FIJI'S CRUISE LINE

INTRODUCING

FIJI LUXURY SMALL SHIP EXPEDITION CRUISING

**MS CALEDONIAN SKY**



[CAPTAINCOOKCRUISESIJI.COM](http://CAPTAINCOOKCRUISESIJI.COM)

# A JOURNEY INTO THE UNEXPLORED

## GO BEYOND WITH EXCLUSIVE ACCESS

With little contact with the outside world, this unspoilt paradise is open exclusively to you when you cruise with us on MS Caledonian Sky. A new destination or even two each day.

Journey by zodiac and visit places far off the beaten track, villages and schools, experiencing traditional ceremonies and more - you will go where other travellers cannot get to.

## FIJI'S BEST KEPT SECRETS - EXPLORE, EXPERIENCE AND LEARN

Our unmatched expedition team of marine biologists and cultural experts will guide and inform you about the unexplored Lau Islands, the remote north of Fiji and beyond. A unique and exclusive opportunity to learn and experience.

## SWIMMING, SNORKELLING, DIVING, STAND UP PADDLEBOARDING & KAYAKING

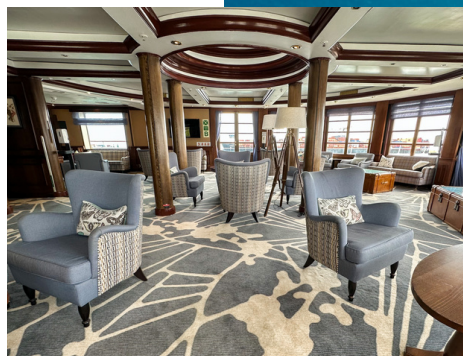
Be guided by our experts as you discover the pristine coral reefs and marine life of the untouched remote reaches of Fiji, southern Tonga and northern Samoa.

## YOUR OCEAN VIEW SUITES

A range of elegantly appointed ocean view standard, superior, premium plus deluxe suites with private balconies.

## FLAVOURS OF FIJI

Dining is a vital ingredient of your Fiji cruise. All food is prepared onboard, from fresh, local and imported produce. Our onboard entertainment adds an authentic flavour to the mix.



EXPEDITION ITINERARIES EXCLUSIVE TO YOU



## LAU AND KADAVU ISLANDS

Departing: Port Denarau Saturday 1pm on selected dates

### 7 Night Lau and Kadavu Cruise

The remote Lau and Kadavu island groups.

Highlights: Exploring old ruins, the lagoons of Qilqila renowned for its mushroom-shaped islands, and the central lake in the uninhabited Vuaqava island.

### 11 Night Lau and Kadavu Discovery Cruise - 19 March 2024

The full 7 night Lau itinerary plus Oneata and Taveuni.

Highlights: The mystical caves and mushroom shaped islands of Qila Qila, the pristine waters of the flooded volcanic crater of Fulaga.

## NORTHERN AND SOUTHERN LAU

Departing: Port Denarau Saturday 1pm on selected dates

### 7 Night Southern Lau and Kadavu Cruise

Exploring the remote southern Lau and Kadavu island groups, you will swim on the great sea reef, visiting islands including Dravuni, Moala, Fulaga, Matuku, Beqa and Vatulele.

### 7 Night Northern Lau and Kadavu Cruise

The northern Lau islands of Fiji including Makogai, Vatu Vara, Wailagi Lala, Qilqila Bay of Islands Vanua Balavu, Cicia and Nananu I Ra.

## THE REMOTE NORTH

Departing: Port Denarau Saturday 1pm on selected dates

### 7 Night Remote North Cruise

The coast of Viti Levu (Fiji's main island) then onto Makogai in the Bligh, Levuka on the island of Ovalau, Kioa, Taveuni and Savusavu.

Highlights: Levuka – colonial capital of Fiji, Bouma Waterfall, Savusavu – extinct volcanic crater, hot springs, natural pearl markets and more.

## YASAWA & MAMANUCA ISLANDS

Departing: Port Denarau 1pm Tuesdays and Saturdays

### 3, 4 or 7 Night Cruises

Highlights: Sacred Islands, Waya & Waya Sewa, Sawa i Lau limestone cliffs and aquamarine lagoon are the most awe inspiring beaches in the group.

## REMOTE FIJI AND VOYAGES TO TONGA AND SAMOA

Departing: Port Denarau Saturday 1pm on selected dates

### 14 Night Southern Lau and Tonga Whale Migration Cruise

Exploring the southern Lau island groups of Fiji and then embarking on an expedition to the outer islands of Tonga.

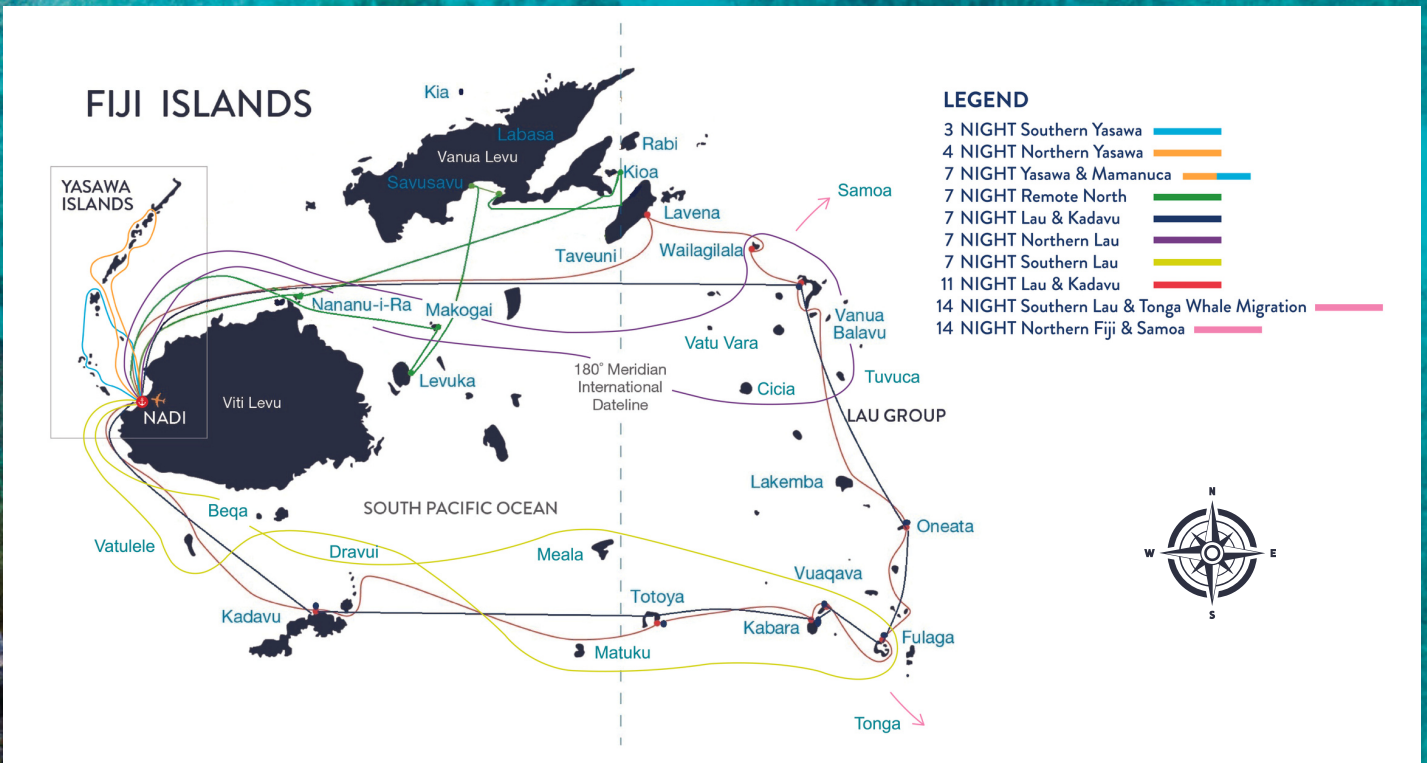
Highlights: Exploring the Lau islands, swimming with whales during the whale migration in Tonga. Mutiny on the Bounty - follow Bligh's journey from Tonga to the Northern Yasawas.

### 14 Night Northern Fiji and Samoa Cruise

Venturing to the northern Lau island groups of Fiji and then further cruising to the outer islands of Samoa.

Highlights: The extraordinary blow holes of Samoa's Alofaaga.

# TRANSFORMING THE EXPERIENCE OF REMOTE FIJI AND BEYOND



Comprising 57 exceptionally spacious, well designed suites with ocean views arranged over four decks, all suites feature a sitting room area and some have private balconies. Each affords considerable comfort with en-suite bathroom featuring a country style wash basin, hot towel rack and vanity unit with sink and walk-in shower and/or bath tub. Each have walk-in or spacious wardrobes, dressing table with large mirror and stool or desk, mini-fridge, flat screen television, telephone, programmable electronic safe, hairdryer, assorted toiletries, air-conditioning and heating, bottled water, dressing gowns and slippers.

